

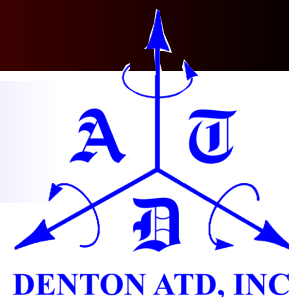
NEW



3-YEAR OLD

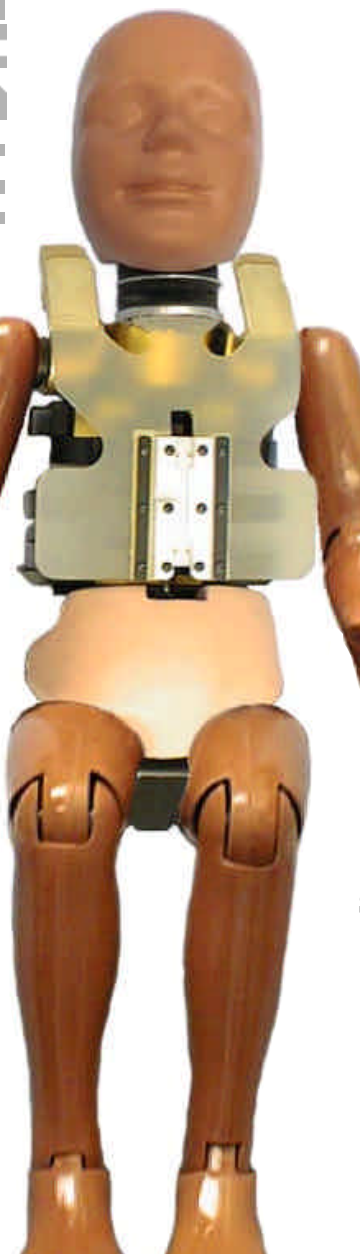
Test Dummy

Model Number: 210-0000



HYBRID

Creating the New Standard in ATD's



The Hybrid III 3-Year Old Child was originally designed in 1992 as a collaboration between the SAE Biomechanics committees and the National Highway Transport Safety Administration (NHTSA). This ATD was designed to allow frontal loading in both sitting and standing postures and was upgraded in 1997 for the evaluation of "Out of Position" (OOP) air-bag aggressiveness testing. Size and weight specifications for the Hybrid III 3-Year Old are based on child anthropometric studies.

The head is constructed of a fiberglass skull with a molded vinyl head and cap skin and a segmented neck made of molded rubber for human-like flexion and extension. The torso is composed of a steel thoracic spine weldment with three damped, spring steel rib assemblies and a chest potentiometer. The Torso flesh is molded urethane with nylon netting reinforcement. The pelvis assembly consists of an aluminum weldment with a flexible molded rubber spine and a mounting configuration for a six-channel load cell between the lumbar spine and pelvis. The limbs are steel and aluminum bones molded into urethane.

The Hybrid III 3-Year Old Child ATD is specified under Title 49 CFR Part 572, Subpart P

The calibration and certification tests performed prior to shipment include:

- Head Drop
- Neck Flexion and Extension
- Thorax Impact
- Torso Flexion

Standard equipment included in the base price of this test device:

- Chest Deflection Transducer
- Six Axis Neck and Lumbar Transducer Structural Replacements
- Anterior Superior Iliac Spine Load Cell Structural Replacements
- Pubic Symphysis and Acetabulum Load Cell Structural Replacements
- Accelerometer mounts for Head, Chest and Pelvis *User must specify the accelerometer manufacturer and type at the time of order placement.

WEIGHTS:	Pounds (lbs.)	Kilograms
Head	6.00	2.72
Neck	1.65	.75
Upper Torso w/ Jacket	15.43	7.00
Upper Arm	.97	.44
Lower Arm	1.01	.46
Upper Leg	2.23	1.01
Lower Leg	1.34	.61
Total Weight	35.65	16.17

DIMENSIONS:	Inches	Centimeters
Head Circumference	20.00	50.80
Head Breadth	5.35	13.59
Head Depth	6.89	17.50
Shoulder to Elbow	7.60	19.30
Buttock to Knee Length	11.51	29.24
Knee Pivot Height	9.81	24.92
Sitting Height	21.50	54.61
Standing Height	37.20	94.49