

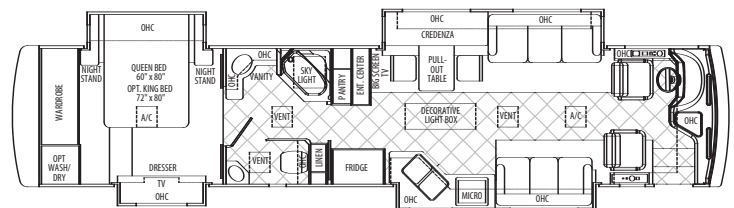


KING *of the* **ROAD**®

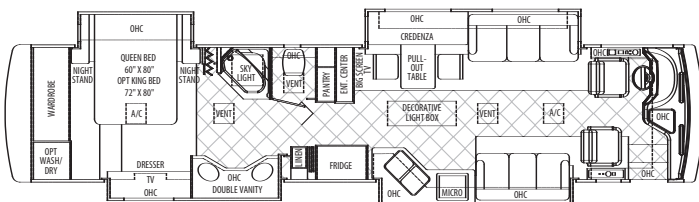
Now in its third generation, the 2006 Genesis boasts a sleek bus-style front cap, one-piece windshield, and restyled cockpit—all designed to deliver mile upon mile of uninterrupted enjoyment. It's time you experienced the Genesis, setting the benchmark in the premium diesel motor-home market.



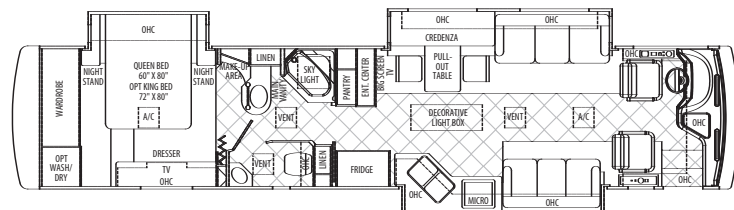
MODEL G40QH – Quad Slide



MODEL G40QG – Quad Slide



MODEL G40TF – Triple Slide



Chassis/Engine/Suspension

- Freightliner® Chassis
- Cummins® ISL 400 hp, 1,200 lb Torque
- Allison® 3,000 MH 6-Speed Transmission
- 150-gal Tank w/Dual Side Fill
- Michelin® Radial Tires 275/80R/22.5
- Polished Aluminum Wheels
- Norway® Custom Air Ride Suspension
- 4-Bag Air Suspension System
- Independent Front Suspension
- Antilock Braking w/Full Air Brakes
- Exhaust Brake
- Auto Slack Adjusters
- Fuel & Water Separator
- Transmission Temperature Gauge
- Transmission Oil Cooler
- Side-Mount Radiator
- Heavy-Duty, 160-Amp Alternator
- 2 Alliance® Group 31 12-Volt Batteries
- Rear Side Air Intake
- Air Cleaner Restriction Indicator
- HWH® Automatic Hydraulic Leveling Jacks
- 10,000-lb Hitch Receiver w/Connector
- Undercoating
- Front & Rear Mud Flaps
- Chrome Exhaust Extension

Body Construction

- Aluminum-Framed Vacubonded Floor
- Steel-Framed Basement Structure
- Steel-Framed Reinforced Front Cage
- Aluminum-Framed Roof
- Seamless 1-Piece Crowned Fiberglass Roof
- Vacubonded Gel Coat Fiberglass Sidewalls
- Fiberglass Front & Rear Molded Caps

Cockpit

- Vacuum Bonded Molded Dash w/Matching Wood Instrument Panels
- Multi-6 Gauge Chrome Ringed w/White Background
- Electronic Cruise Control & Throttle
- Adjustable Accelerator & Brake Pedals
- Pioneer® Navigation System – AM/FM/CD/XM Radio w/Screen Display
- CB Ready
- Smart Wheel® w/Headlamp Buttons, Cruise Control & Windshield Wiper Delay Controls
- Tilt/Telescoping Power Steering
- Backup Camera & Monitor
- Power Sun Visors w/Dual Controls
- Interior Windshield Shade

- Side-Mount Docking Lights
- Audible Turn Signals
- Air Horns
- Chrome Heated Exterior Remote Mirrors
- Flexsteel® Ultraleather 6-Way Power Pilot Seat
- Flexsteel® Ultraleather 6-Way Power Copilot Seat w/Power Footrest
- 12-Volt Dash Receptacle
- 2 Interior Entry Assist Handles
- Power Triple Entry Step w/Light
- Air-Driven Step Well Cover
- Dual Map Lights
- Generator Start/Stop/Hour Meter

Exterior

- Premium Exterior Full Body Paint
- Dual-Pane Solar Reflective Windows
- Entry Door w/Screen & Dead Bolt Lock
- A&E® One-Step Power Awning w/Wind Sensor & Remote
- A&E® Full Case Slide Topper Awnings
- Single Lockable Storage Door Handle
- Side-Hinge Aluminum Baggage Doors
- Heated Basement Storage
- Lighted & Carpeted Storage Bays
- Heated Tank Compartments
- Folding Exterior Roof Ladder

Electrical Systems & Lights

- Onan® 7.5 kW Quiet Diesel Generator
- Electric Generator Slide
- 50-Amp Service w/Cord
- Centralized Monitor Control Area
- Driving Lights
- Fog Lights
- Exterior Security Light for Patio
- (4) 6-Volt House Batteries
- 2,000-Watt Zantrex® Inverter
- Solar Panel Ready
- Intellitec® RV Multiplex Switching System
- 110-Volt Fluorescent Kitchen Décor Light
- 12-Volt Thin-Lights Throughout
- Rope Mood Lighting
- Halogen Reading Lights
- Dinette Décor Light
- Entry Floor Light
- Step Switch
- 12-Volt Disconnect Switch
- Cable Ready
- Computer & Phone Hookups
- 12-Volt Receptacles
- Basement Cable TV & Telephone Hookups
- 6-Pin Tow Plug

Plumbing

- Centralized Water Management System w/Built-In Water Heater By-Pass Kit, Black Water Tank Flush Kit & Winterization Antifreeze Hookup Valve
- Monitor Panel (2 Locations Inside & Water Management Area)
- Electric Operated Tank Drain Valves w/Tank Level Monitors & Water Pump Switch
- Built-In Wash Station w/Soap Dispenser & Paper Towel Holder
- 12-gal DSI Gas/Electric Water Heater
- China Marine Toilet
- Water Filter w/Water Purification System
- Moen® Single-Lever Kitchen Faucet w/Built-In Sprayer
- Fresh Water (105 Gallons)
- Grey Water (60 Gallons)
- Black Water (60 Gallons)

Heating/Air Conditioning/Vents

- Fantastic Fan® in Kitchen, Bathroom & Toilet Room
- Coleman® 15,000 BTU Low Profile Air Conditioners w/Heat Pumps (2)
- 30,000 BTU Ducted Furnaces (2)
- Automotive Heat
- Automotive Air Conditioning

Appliances & Accessories

- Digital Satellite w/Automatic Lift
- TV Antenna w/Booster
- 32" LCD Flat Screen TV
- 20" Flat Screen TV in Bedroom
- Surround Sound Audio/Video System with 5-Disc DVD/CD Player
- Recessed 3-Burner Cooktop w/Polished Solid Surface Flushtop
- Spacesaver Convection Microwave w/Range Hood & Stainless Steel Door Front
- 12-cu-ft, 4-Door Refrigerator w/Ice Maker & Stainless Steel Door Fronts
- Central Vacuum System
- Washer/Dryer Prep
- Carbon Monoxide Detector
- LP Gas Leak Detector
- Smoke Detector
- Fire Extinguisher

Interior

- Hardwood Cabinetry w/Choice of Wood
- Raised-Panel Cabinet Doors
- Residential-Grade Cabinet Hardware

- Soft Cloth Covered Cabinet Shelves
- Soft Touch Padded Vinyl Ceiling
- Hardwood Valances w/Inserts
- Flexsteel® Leather Lounge Sofa w/Easy Bed & Drawer
- Residential-Grade Sculptured Carpeting w/Padding in Living Room & Bedroom
- Day/Night Shades in Living Room & Bedroom
- Pull-Out Dinette Table w/Hidden Leaf to Seat 4
- 2 Dinette Chairs
- Polished Solid Surface Kitchen Countertop w/Integrated Solid Surface Sink & Sink Covers
- Polished Solid Surface Bathroom Countertop w/Integrated Solid Surface Sink
- Ceramic Tile Flooring in Kitchen, Bathroom & Entryway
- Large Molded 1-Piece Garden Tub/Shower w/Glass Enclosure
- Skylight w/Shade in Shower
- Cedar-Lined, Mirrored Wardrobe
- Hardwood Bedroom Dresser w/Polished Hardwood Top
- Elegant Hardwood Bedroom Poster Headboard & Night Stands w/Polished Hardwood Tops
- Queen Innerspring, Pillow Top Mattress
- Bed Comforter w/Throw Pillow

Optional Features

- Folding Padded Dinette Chairs (2)
- Electric Fireplace
- Marble-Looking Tile
- King Bed Upgraded Pillow Top Mattress
- 2 1/2" Toilet Riser Base
- Safe
- CB Radio w/Antenna
- Electronic In-Motion Dome Satellite
- 2-Way Radio System w/Charger & 4 Radios
- Combination Washer/Dryer
- Spot Light w/Remote
- Exterior Entertainment Center
- Exterior Refrigerator/Freezer
- Custom Full-Width Mud Flap
- 3M® Film Front Mask
- Storage Compartment Slide Tray
- Window Awning Package
- Electric Door Awning
- Automatic Rewind Water Hose Reel
- Automatic Rewind 50-Amp Cord Reel
- Solar Panels (2)
- Hydro-Hot® System
- Universal Remote Control

Your King of the Road Dealer:



KING of the **ROAD**®

Factory & Offices • 1313 Road G • PO. Box 99 • York, NE 68467
402-363-7460 • 866-400-9840

Service Center • 211 South Front Street • Russell, KS 67665
785-483-2138



An Independent Retailer

www.KingoftheRoadRV.com